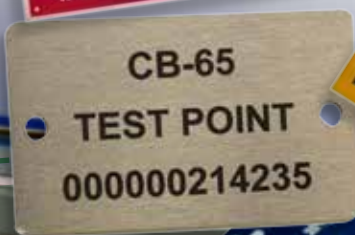


Compliance & Builder ID Plates

Inscribe
AUSTRALIA



Why Choose Inscribe for Compliance Plates & Tags?

Inscribe Australia offers competitive pricing on all Compliance & Builder ID Plates services. We want your work!

We offer a total labelling solution & service from concept layout and design through to manufacture. With our online order tracking to help keep you informed

Expertise, diversity and flexibility:

From smallest, right up to the largest label project imaginable, Inscribe Australia has the capabilities to fulfil your needs. We have more than 30 years experience and our workshops house the latest state of the art machines available.

Insurance & Guarantee

We take pride in manufacturing a great product. All our products come with a satisfaction guarantee. You can be sure all our workmanship is made to Australian & New Zealand standards.

Inscribe Australia manufactures any custom, heavy-duty, metal compliance ID and asset plates for a variety of industrial applications and can provide the plates as template blanks or fully engraved with data required. We have a great selection of stainless steel or colour anodised aluminum, these compliance plates are practically indestructible. All plates are custom made by either laser etching or machine engraved and paint filled process. Regardless of fabrication techniques, the applied markings are UV and scratch resistant and are suitable for use in harsh industrial conditions. We can add your company logo's and details or any other details, even QR and barcodes can be added to your plates.

ID Plates and compliance plates are available with High TAC 3M adhesive backing, holes or slots for easy attachment to your products.

 **9465 7631**

www.inscribe.com.au

Compliance & Builder ID Plates

Asset ID Plates

Protect your valuable assets with Asset ID Plates a permanent visual security marking for asset identification as recommended by the Police and insurance companies. Conforms to home office guidelines by using your name and postcode as a way of identifying your property - this will also help recovery in case of theft. Inscribe Australia has produced thousands of Asset ID plates over the years and supplied to local Authorities, NHW, educational establishments - even the police as well as thousands of companies. How detailed of engraving can you achieve on compliance plates?

These samples on this page says it all. At 100% speed, the laser can still achieve these engraving results. No tricks, no special optics, just clean laser quality.

Do you have a very detailed image to engrave, try it on any other laser, then engrave it on an our Epilog Laser. You'll see a higher quality engraving from the Epilog system, as well as higher speed engraving. We'll put our engraving quality up against anyone's

The Epilog Fusions series systems have 1200DPI and very fast vector cutting speeds we are always amazed with each job we produce how great they really are. Come in and see our show room get a Free sample and quote.



Bar code & QR codes on asset compliance plates

Whether you're looking for asset label for tracking your assets, or simply looking to incorporate a barcode on your compliance plate, We can laser mark some off the most common code like 128, 39 and QR formats. Barcode labels can contain alphanumeric characters (except EAN codes), and we can even supply them using variable data from Excel spreadsheets or database files. Utilising the latest in digital print technology, we are able to incorporate company corporate colours on your labels, delivered within a matter of days!

ABOUT INSCRIBE AUSTRALIA

Inscribe Australia has 30 years experience in the signage and engraving industry managed & directed by Devon Jackson and Chris Calleja, Supported by an experienced in house graphic design and digital printing studio with an expert technical engraving engineers and craftsman.

We have a reputation for skilled, quality work,carried out to the highest standards of excellence.

Contact Us:

27 Northgate drive Thomstown Vic.
Email : info@inscribe.com.au
Tel:+61 03 94657631

